

LIGHT/SIREN CONTROLLERS

F3 SERIES



- Selectable setting for flash pattern
- Input Voltage: 11 to 16 Volts DC
- Operation Temperature Ranges: -30°C to +65°C
- Standby Current: 0.05mA ± 10%
- SIREN SPECS**
- Operating Current: 10Amps
- Frequency Range: 700 to 1640 Hz
- Cycle rate: Wail - 17 cycles/min
Yelp - 230 cycles/min
Stinger - 1000 cycles/min
- Meets SAE J1849

*** NOW AVAILABLE ***

NEW F3.SI SERIES WITH STEERING WHEEL CONTROL INTERFACE MODULE. CALL FOR MORE DETAILS

RDS16S



- 14 controlled outputs:
3@20Amps, 11@10Amps
- All control outputs are solid state relays
- Park Kill
- Operates one or two 100W speakers
- Meets SAE J1849
- Other models available

POWER DISTRIBUTION UNIT

PDU42WB



- Organizes vehicle wiring runs
- All power connections at one central location
- Provides direct Power, Ignition Power and Timed Power
- Makes a safer electrical connection to vehicle
- Built-in Watchdog
- Other models available

SPEAKERS

DRCS100



- DRCS100 is one of D&R's most innovative cast 100 Watt speakers
- Class A - SAE approved
- Dimensions: Width - 6.5", Height - 5.375", Depth - 3.0"
- 935-0060A - DRCS100 bracket to use with Chevy Caprice

DRCS110



- All weather nylon composite black housing with front loaded 100W speaker driver
- Exceeds Class A, SAE J1849 requirements
- Dimensions: Width - 6.85", Height - 6.35", Depth - 2.78"
- 935-0067A - bracket to mount DRCS110 on pushbumper

L121 LED INSERT

- Lamp and In-Line flasher are fully encapsulated for moisture and vibration resistance
- Includes synchronize feature for alternating and synchronous flashing of multiple lamps
- Ultra small



PUSHBUMPER W/MR6 LIGHTS



WB-CAPRICE

- Rear window bar is offering protection from windows being kicked out by restrained prisoners while placed in the back seat
- Designed to fit with rear partition cages by Setina Manufacturing
- Optional dual MR6 light module per side for side warning coverage



ML8I LIGHT



- Surface mount module
- 8 LEDs per module
- Lamp and In-Line flasher are fully encapsulated for moisture and vibration resistance
- Able to synchronize in both alternating and synchronous modes
- Safe low voltage wiring
- Black or White external bezel



CHEVY CAPRICE



LAW ENFORCEMENT PRODUCTS

DESIGNING / MANUFACTURING INSTALLATION



D&R ELECTRONICS CO.LTD.
8820 GEORGE BOLTON PKWY. BOLTON, ONTARIO L7E 2Y4
Toll Free: 1-800-538-7338 / FAX: 905-951-0019
www.dandrelectronics.com

www.dandrelectronics.com

PL-46 LINEAR LIGHTBAR

- New generation lightbar that combines the best features of LED technology
- Linear 6 or 12 High Power LED plug-in modules
- Mounting kits available for most makes and models of vehicles
- Meets all applicable SAE Class 1 and California Title XIII when properly configured
- Strong Extruded aluminum frame and UV treated polycarbonate lens
- Available sizes:
Length - 22" / 35" / 46" / 56"
Width - 13.0"
Height - 2.75" (w/o mounting feet)



MR6-8TDXEK

TRAFFIC DIRECTOR
State of the art bi-functional (warning device and arrowstick) traffic warning device, designed to be compact yet provide maximum light intensity.



MR6 / MR6F / MR12 LINEAR LED LIGHTS

- The latest in LED technology
- Surface mount or Flush mount linear LED flashing modules ideally suited for use in directional warning solutions
- Compact modules provide great versatility for a wide range of mounting options
- All modules are sealed, waterproof for external mounting applications
- Also available installed as flush-mounted in Setina Push Bumper
- Multiple Flash Patterns built-in
- Meets SAE Class 1

MR6 LED LIGHT



- Dimensions:
Width - 3.25" / Height - 1.25" / Depth - 1.1"

MR6F LED LIGHT



- Dimensions:
Width - 3.25" / Height - 1.5" / Depth - 1.0"

MR12 LED LIGHT



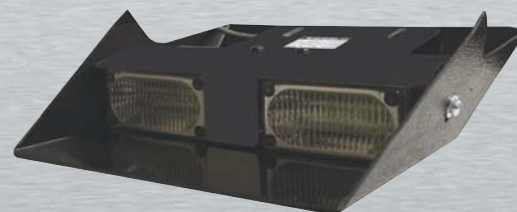
- Dimensions:
Width - 3.25" / Height - 2.75" / Depth - 1.1"

MR6-X/X-WL

- High visibility when activated
- Low profile, lightweight
- Extremely discrete and non-intrusive
- W-3.8" / H-1.3" / D-1.6"

FEATURES

- Dual or split module, Linear Super LEDs
- Lightweight and sturdy
- Rated for 100,000 hours of operation
- Multiple flash patterns
- Polycarbonate assembly is safer than metal in the event of an accident or airbag deployment



901-0078A CONSOLE

- Designed to fit 2011-2013 Chevy Caprice
- Floorplate not required to install this console
- Allows mounting up to 5 pieces of equipment
- Power outlets on passenger side of console



CA-0129/CA-0130



- LED Maplight
- Available in 12" & 18" lengths
- 3 Phase light intensity 1 Watt LED
- 280° Turning Radius
- Dual 1 Watt Red & White LED's

904-0123A

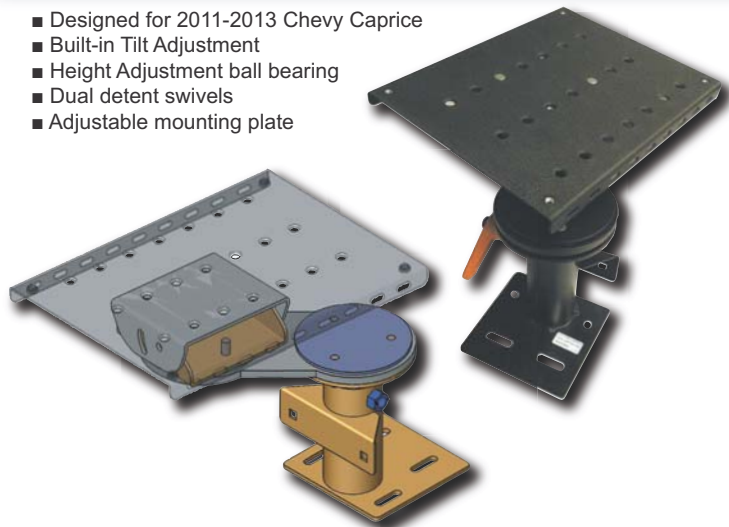


* NEW *

- Console mount armrest

906-0195A

- Designed for 2011-2013 Chevy Caprice
- Built-in Tilt Adjustment
- Height Adjustment ball bearing
- Dual detent swivels
- Adjustable mounting plate



932-0018A

- Full size Electronic Trunk Side Door compartment for 2011-2013 Chevy Caprice
- 932-0018A - Driver Side Mounting
- 932-0020B - Passenger Side Mounting



MINI ODYSSEY LIGHTBAR

- Compact lightbar and arrowboard combination
- The retractable motorized arrowboard/traffic director and Message Board provides superior visibility in a low profile configuration
- Full advantage of a 360 degree lightbar when in lower position
- Motorized for easy deployment
- Mounting kit included
- Meets SAE Class1 when properly configured



LT6600 / 906-0190A



- Passenger Side Mount connects to the passenger seat bolts using specific vehicle Mounting Kit
- Full featured computer mount with height, tilt, dual swivel and extension adjustments
- Various mounting kits available depending on the make, model and year of vehicle

LT6600 Mounting Kit for 2011-2013 Chevy Caprice
LT66MK-Caprice



932-0028A

- 2011-2013 Chevy Caprice **half trunk drawer**
- Front is protected with a perforated aluminum panel



932-0022A

- 2011-2013 Chevy Caprice **full trunk drawer**
- Full width trunk equipment tray made from 10-gauge aluminum that slides out for easy equipment placement and maintenance
- Spare tire must be removed or relocated to trunk floor
- Front is protected with a perforated aluminum panel

